



Reduce visual clutter
Maximize floor space

Getting Started

If you're like most people, planning and organizing your home can be overwhelming. Flow Wall is a simple solution to organize your piles into an organized, findable, clean space. We can assist you in building a custom solution or you can select from our Flow Wall systems. Get started with our simple three step process below.

1. PLAN & MEASURE

- **What do you want to organize?**

Use the checklist suggestions on page 6 and 7 to assist you in getting the right accessories.

- **Measure your space**

Start by measuring the **height** and **width** of the wall(s). Take note of windows, electrical outlets or any other obstructions on the wall.

2. SELECT A SYSTEM

- **Select a Flow Wall Kit ONLINE**

Based on your need and wall size, Select a Hook and Panel or Cabinet System
or
Call **877-203-5974** or for assistance with a custom order.

- **Select your Hooks and Accessories ONLINE**

3. ORDER & INSTALL

- **Check out ONLINE**

Your order will arrive in 7-14 business days; however, during peak spring and summer months, this may increase.

- **Install your Flow Wall**

Easy to follow instructions are included with your Flow Wall

or

Watch our easy-install video at:

www.youtube.com/watch?v=6vKhmLFjjOs



How Flow Wall Works

It all starts with the panel followed by the cabinets, drawers, hooks, and bins. It's easy to install, customize, and organize.

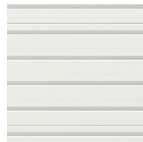
FLOW WALL PANELS



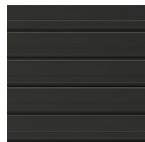
Our patented panel is the perfect foundation for your home storage solutions. Featuring our unique click-in design, our system allows you to customize your space to fit your storage needs. Easy to install and maintain, our panels grow as your storage needs grow, clearing clutter off your floor with wall mounted storage.



Silver

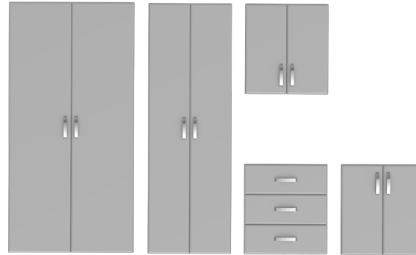


White



Black

CABINETS & DRAWERS



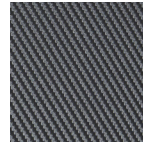
Our cabinets and drawers are constructed from a high density press board with textured PVC laminate, with doors constructed from a high quality MDF. Carbon Fiber doors are wrapped in a textured finish that enhances the leading-edge design of our system.



Silver



White



Graphite
Carbon

HOOKS, BINS & SHELVES



With 40+ hooks, bins, and shelves hanging and storing your gear and equipment is easy with our patented click-in-hook system. Hooks clip securely in and out of the Flow Wall panel.



Why Flow Wall Organizing Systems are #1



BACKLESS CABINETS

Integrate any hook, bin, or shelf to keep things organized behind cabinet doors.

CABINETS

Our 24 inch wide cabinets provide abundant storage and include adjustable shelves to fit all your miscellaneous items.

DRAWERS

Our Drawer Cabinet has three deep drawers to make the perfect solution for wall storage. Each drawer holds up to 50 lbs, making it the perfect solution for tools, toys, and more.

JUMBO CABINETS

Keep your gear off the floor and behind closed doors with maximum storage space. This 72-inch high wall mounted cabinet includes four adjustable shelves to fit all of your storage needs.

SOFT CLOSE HINGES

Our cabinets feature soft-close hinges to avoid slamming doors. Sturdy metal handles, embossed with the Flow Wall logo, grip easy to give a smooth flow when opening and closing the doors.

HOOKS | Select the items you'll need

<p>VERTICAL BIKE HOOK FSH-010-1</p> <p><input type="checkbox"/> Bicycle</p>  <p><i>Holds up to 35 lbs</i></p>	<p>GRAVITY HOOK - 3 pk FSH-018-3</p> <p><input type="checkbox"/> Mops <input type="checkbox"/> Brooms <input type="checkbox"/> Shovels (Handled objects)</p>  <p><i>Holds up to 15 lbs</i></p>	<p>X-HOOK - 10pk FSH-017-10</p> <p><input type="checkbox"/> Backpacks <input type="checkbox"/> Coats <input type="checkbox"/> Helmets</p>  <p><i>Holds up to 15 lbs</i></p>	<p>TOTALS:</p> <p>____ Vertical Bike Hook: FSH-010-1</p> <p>____ Gravity Hook FSH-018-3 - 3pk</p> <p>____ X-Hook FSH-017-10 - 10pk</p> <p>____ Bin Holder Bracket FSH-022-1</p> <p>____ Short Hook 4" FSH-041-6 - 6pk</p> <p>____ Ski Sports Hook FSH-015-2 - 2pk</p> <p>____ HD Dual Bracket Hook FSH-029-1</p> <p>____ Big Mouth Hook FSH-074-2 - 2pk</p> <p>____ S-Hook FSH-039-4 - 4pk</p> <p>____ Nylon Strap Hook FSH-035-3 - 3pk</p> <p>____ Magnet Hook FSH-007-1</p> <p>____ Long Hook 8" FSH-036-4 - 4pk</p> <p>____ L Hook FSH-003-10 - 10pk</p>
<p>BIN HOLDER BRACKET FSH-022-1</p> <p><input type="checkbox"/> Plastic Bins <input type="checkbox"/> Tool boxes <input type="checkbox"/> Buckets <input type="checkbox"/> Coolers</p>  <p><i>Holds up to 50 lbs</i></p>	<p>SHORT HOOK 4" - 6pk FSH-041-6</p> <p><input type="checkbox"/> Helmets <input type="checkbox"/> Backpack <input type="checkbox"/> Bat <input type="checkbox"/> Gloves <input type="checkbox"/> Yard Tools <input type="checkbox"/> Lawn Chair</p>  <p><i>Holds up to 50 lbs</i></p>	<p>SKI SPORTS HOOK - 2pk FSH-015-2</p> <p><input type="checkbox"/> Skis and Poles <input type="checkbox"/> Water Skis <input type="checkbox"/> Snowboards</p>  <p><i>Holds up to 25 lbs</i></p>	
<p>HEAVY DUTY DUAL BRACKET HOOK FSH-029-1</p> <p><input type="checkbox"/> Ladders <input type="checkbox"/> Dolly <input type="checkbox"/> Heavy Bags <input type="checkbox"/> Kayak Base <input type="checkbox"/> Step Stools <input type="checkbox"/> Heavy Items <input type="checkbox"/> Surf/Snow Boards</p>  <p><i>Holds up to 75 lbs</i></p>	<p>BIG MOUTH UTILITY HOOK - 2pk FSH-074-2</p> <p><input type="checkbox"/> Blower <input type="checkbox"/> Trimmer <input type="checkbox"/> Ironing Board <input type="checkbox"/> Chain Saw <input type="checkbox"/> Iron <input type="checkbox"/> Heavy Tools</p>  <p><i>Holds up to 60 lbs</i></p>	<p>S-HOOK - 4pk FSH-039-4</p> <p><input type="checkbox"/> Shovel/Rake <input type="checkbox"/> Power Drill <input type="checkbox"/> Power Saw <input type="checkbox"/> Bats</p>  <p><i>Holds up to 25 lbs</i></p>	
<p>NYLON STRAP HOOK - 3 pk FSH-035-3</p> <p><input type="checkbox"/> Extension Cord <input type="checkbox"/> Belts <input type="checkbox"/> Cables <input type="checkbox"/> Tie Downs <input type="checkbox"/> Garden Hose</p>  <p><i>Holds up to 30 lbs</i></p>	<p>MAGNET HOOK FSH-007-1</p> <p><input type="checkbox"/> Tools <input type="checkbox"/> Garden Tools <input type="checkbox"/> Key Chains</p>  <p><i>Holds up to 25 lbs</i></p>	<p>LONG HOOK 8" - 4pk FSH-036-4</p> <p><input type="checkbox"/> Shovel/Rake <input type="checkbox"/> Power Drill <input type="checkbox"/> Power Saw <input type="checkbox"/> Lawn Chairs (2) <input type="checkbox"/> Saw Horses (2) <input type="checkbox"/> Bats</p>  <p><i>Holds up to 40 lbs</i></p>	<p>L HOOK - 10pk FSH-003-10</p> <p><input type="checkbox"/> Various hanging <input type="checkbox"/> Backpacks <input type="checkbox"/> Coats <input type="checkbox"/> Helmets</p>  <p><i>Holds up to 20 lbs</i></p>

BINS & SHELVES | Select the items you'll need

<p>SMALL HARD BIN - 5pk FBS-HB210-5C - CLEAR FBS-HB210-5B - BLACK</p>  <p><i>Holds up to 30 lbs</i></p>	<p>HEAVY DUTY METAL SHELF FSS-HD4812-1B - BLACK</p>  <p><i>Holds up to 100 lbs</i></p>	<p>TOTALS: Small Hard Bin - 5pk ____ FBS-HB210-5C - CLEAR ____ FBS-HB210-5B - BLACK</p> <p>Medium Hard Bin - 3pk ____ FBS-HB250-3C - CLEAR ____ FBS-HB250-3B - BLACK</p>
<p>MEDIUM HARD BIN - 3pk FBS-HB250-3C - CLEAR FBS-HB250-3B - BLACK</p>  <p><i>Holds up to 30 lbs</i></p>	<p>JUMBO METAL BRACKET SHELF - 2pk FSS-MB3417-2B</p>  <p><i>Holds up to 75 lbs</i> <i>Shelf for inside Flow Wall Jumbo cabinet</i></p>	<p>Jumbo Hard Bin - 2pk ____ FBS-HB240-2C - CLEAR ____ FBS-HB240-2B - BLACK</p> <p>Soft Storage Bin ____ FSB-SB2412</p> <p>Heavy Duty Metal Shelf ____ FSS-HD4812-1B - BLACK</p>
<p>JUMBO HARD BIN - 2pk FBS-HB240-2C - CLEAR FBS-HB240-2B - BLACK</p>  <p><i>Holds up to 65 lbs</i></p>	<p>METAL BRACKET SHELF - 2pk FSS-MB2412-2B - BLACK FSS-MB2412-2S - SILVER FSS-MB2412-2W - WHITE</p>  <p><i>Holds up to 75 lbs</i></p>	<p>Jumbo Metal Bracket Shelf - 2pk ____ FSS-MB3417-2B</p> <p>Metal Bracket Shelf - 2pk ____ FSS-MA2412-2B - BLACK ____ FSS-MB2412-2S - SILVER ____ FSS-MB2412-2W - WHITE</p>
<p>SOFT STORAGE BIN (24") FSB-SB2412</p>  <p><i>Holds up to 60 lbs</i></p>	<p>CABINET SHELF - 2pk FCS-RS2212-2 Shelf for inside Tall or Base cabinet <i>Cabinets purchased include one shelf (base cabinet) or three shelves (tall cabinet).</i></p>  <p><i>Holds up to 50 lbs</i></p>	<p>Cabinet Shelf - 2pk ____ FCS-RS2212-2</p>

FREE RENDERING

Get a free custom configuration designed by our Flow Wall Planning professionals.

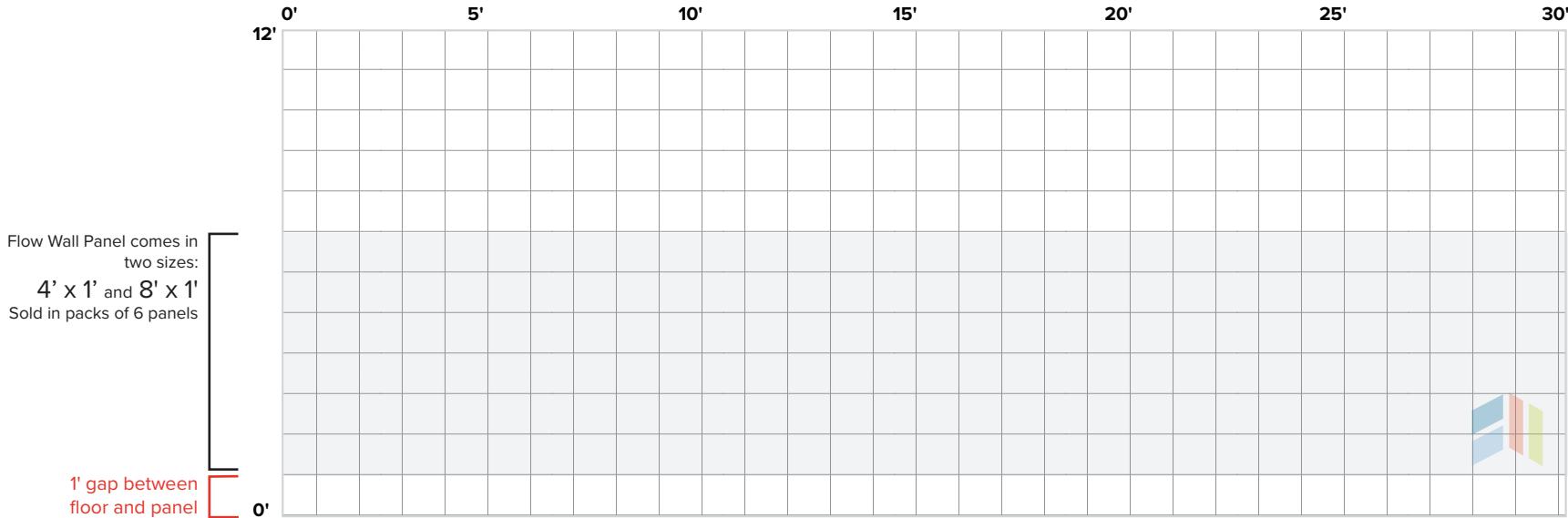
877-203-5974

COMPLIMENTARY PRODUCT SAMPLES

To help you with your purchase decision, we offer complimentary samples. Order samples online at:

flowwall.com/samples-request

SKETCH YOUR WALLS | 1 Square = 1 Square Foot



Tall Cabinets
24" x 72" x 16"



Jumbo Cabinets
36" x 72" x 20"



Base Cabinets
24" x 26" x 16"



Drawer Cabinets
24" x 26" x 16"



Wall Cabinets
24" x 26" x 12"



Work Surface 72"
72" x 16"



Work Surface 48"
48" x 16"



Heavy Duty Metal Shelf
46.5" x 20"



Metal Bracket Shelf
24" x 12"

SKETCH YOUR WALLS | 1 Square = 1 Square Foot

